

Volusia County Criminal Justice Mental Health and
Substance Abuse Planning Project

Stakeholder Meeting:
Cross System Mapping

November 17, 2008



Criminal Justice Mental Health and Substance Abuse Reinvestment Grant

Goals of the Planning Grant:

- Map current system of care
- Develop a strategic plan to improve diversion strategies and treatment efforts

Demonstrate that these investments will ultimately reduced demand on the resources of the law enforcement, judicial, corrections, and health and social services systems.

The Problem

- Many of the same people are served in multiple systems:

- Mental health
- Substance abuse
- Criminal justice
- Other Social Services



- Expensive: high service users, people who cycle and recycle through the system

Solution: Cross-Systems Coordination

Sequential Intercept Model

- People move through criminal justice system in predictable ways
- Illustrates key points to “intercept,” to ensure:
 - Prompt access to treatment
 - Opportunities for diversion
 - Timely movement through criminal justice system
 - Linkage to community resources

Tasks for Meeting

- Review draft Intercept Map, make necessary changes
- Initial Identification of Potential Strategies to include in the Strategic Plan

Focus:

Men and women with. . .

- Serious mental illness, and often
- Co-occurring substance use disorders
- Involved in the criminal justice system

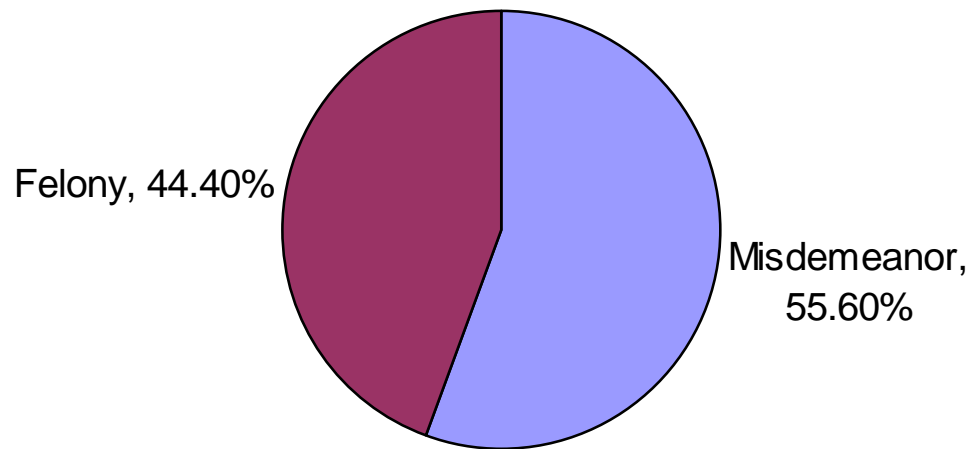
Local Criminal Justice, Mental Health and Substance Abuse Statistics

Corrections Data

Source: Volusia County Corrections, 2007 Annual Report

Jail Admissions in 2007, By Category of Offense

Total Admissions:
39,885



Corrections Data

Source: Volusia County Corrections, 2007 Annual Report

Dangerous drugs	7,994	20.04%
Traffic offense	6,951	17.43%
Assault	5,171	12.96%
Fraud	2,363	5.92%
Invasion of privacy ⁽¹⁾	2,179	5.46%
Larceny	2,172	5.45%
Obstructing judiciary ⁽²⁾	1,953	4.90%
Public order crime ⁽³⁾	1,735	4.35%
Burglary	1,512	3.79%
Obstructing police	1,330	3.33%
Public peace	1,255	3.15%
Municipal ordinance	1,172	2.94%
Robbery	453	1.14%
Stolen vehicle	411	1.03%
Health/safety	408	1.02%
Weapon offense	361	0.91%
Forgery & counterfeiting	347	0.87%
Commercial sex offense	306	0.77%
Damage property	260	0.65%
Stolen property	242	0.61%
<i>Other Offenses</i>	<i>1,311</i>	<i>3.29%</i>
Total	39,886	100.00%

96.71%
of total

Top 20 Offenses, 2007 Jail Admissions

(1) Includes entry with a weapon, driving on closed beach, possession of a police monitor and entering and leaving management area without authorization.

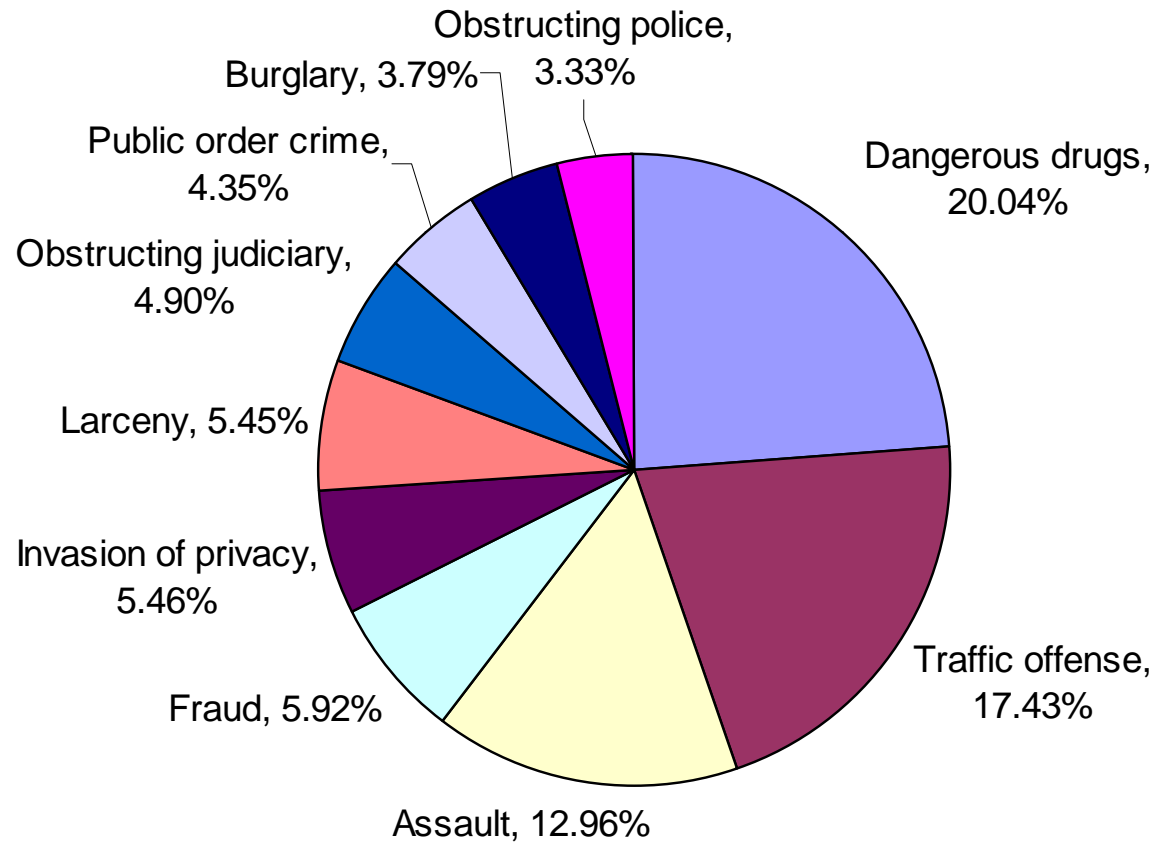
(2) contempt of court, failure to appear, probation/parole violations.

(3) Includes criminal solicitation, obstruction by disguise, and interfering with firemen.

Corrections Data

Source: Volusia County Corrections, 2007 Annual Report

Top 10 Offenses,
2007 Jail
Admissions
(84% of total)



Corrections Data

Source: Volusia County Corrections

- During 2006, **29,538** medical screenings were performed at the Volusia County Jail
 - Of these, **6,943** (23.5%) individuals were referred for further mental health assessment
 - Of these, **2,336** (7.9%) individuals received follow-up mental health chart reviews, assessments and/or services

Corrections Data

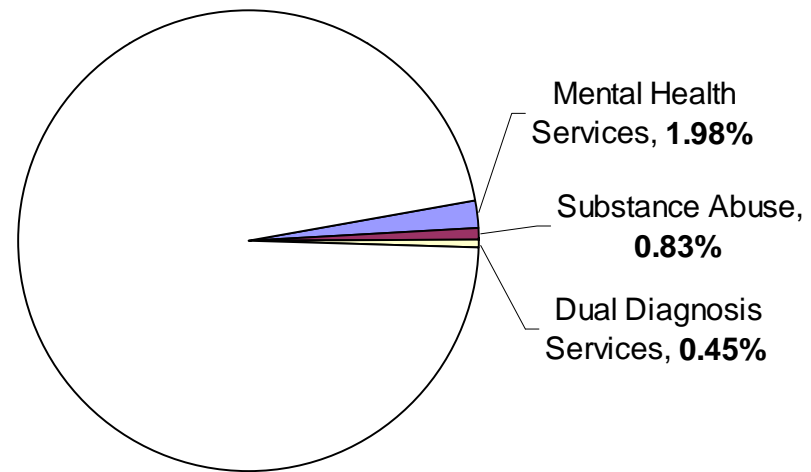
Source: Volusia County Corrections

- From Jan. 1 to June 30, 2007, **14,810** medical screenings were performed at the Volusia County Jail
 - Of these, **3,946** (26.6%) individuals were referred for further mental health assessment
 - Of these, **1,009** (6.8%) individuals received follow-up mental health chart reviews, assessments and/or services

Substance Abuse/Mental Health Data

Source: <http://www.floridatac.org/>

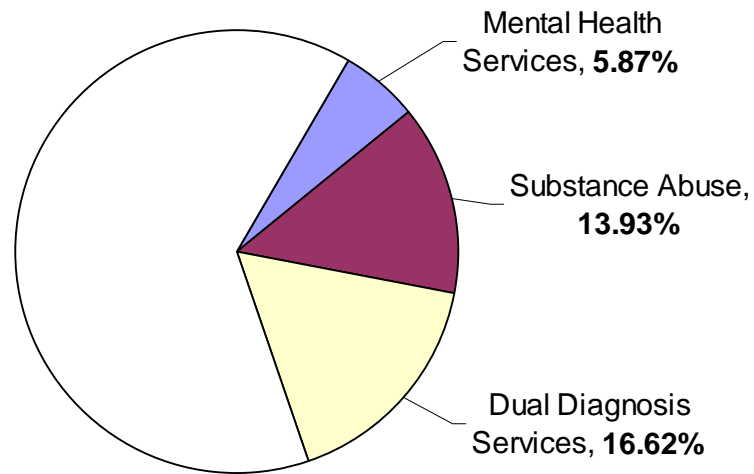
Utilization of Mental Health, Substance Abuse, and/or Dual Diagnosis Services
Percentage of all individuals in the county utilizing these publically funded services



Substance Abuse/Mental Health Data

Source: <http://www.floridatac.org/>

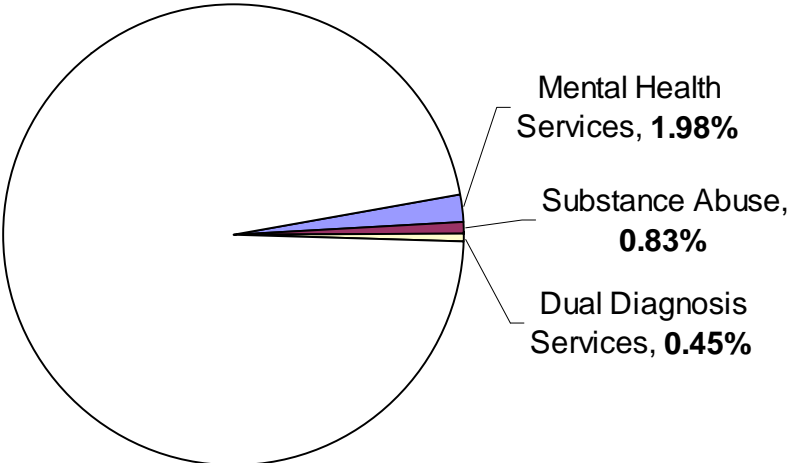
Utilization of Mental Health, Substance Abuse and/or Dual Diagnosis Services
Percentage of all individuals arrested in 2006 who also utilized these publically funded services (between July 1, 2001 and year of arrest)



Substance Abuse/Mental Health Data

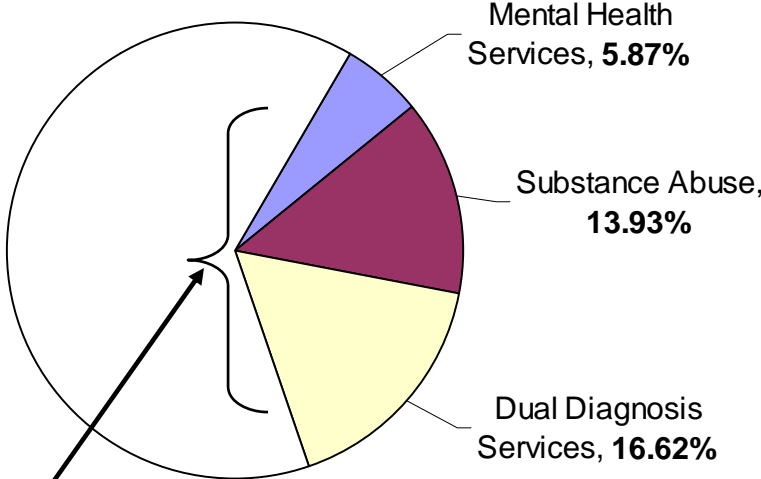
Source: <http://www.floridatac.org/>

General Population



20% (1,481) of these individuals have a Severe Mental Illness

Arrested Population



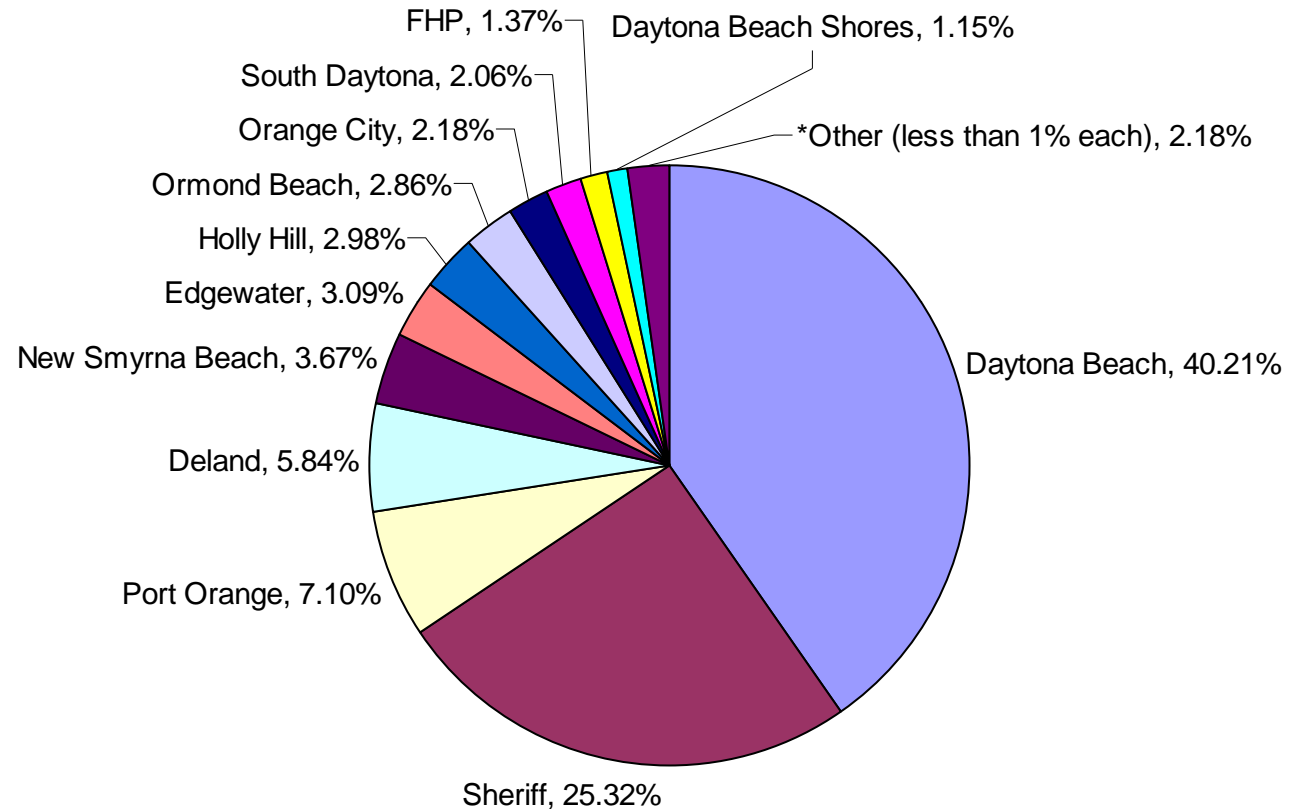
36.42% (7,475) of all individuals arrested in 2006 have utilized SA, MH or DD services

CJMHSA Sample Data

- Reviewed/data-entered the 24-hour reports from:
 - 8-11-08 to 8-15-08
 - 8-25-08 to 8-29-08
 - **874** individuals arrested during these timeframes

CJMHSAs Sample Data

Arrests, by Booking Agency



* Other includes: Beach Patrol, Oak Hill, SAO, Lake Helen, Ponce Inlet, FWCC, DEPA, VCDC

CJMHSAs Sample Data

- Recorded address at time of arrest/booking:

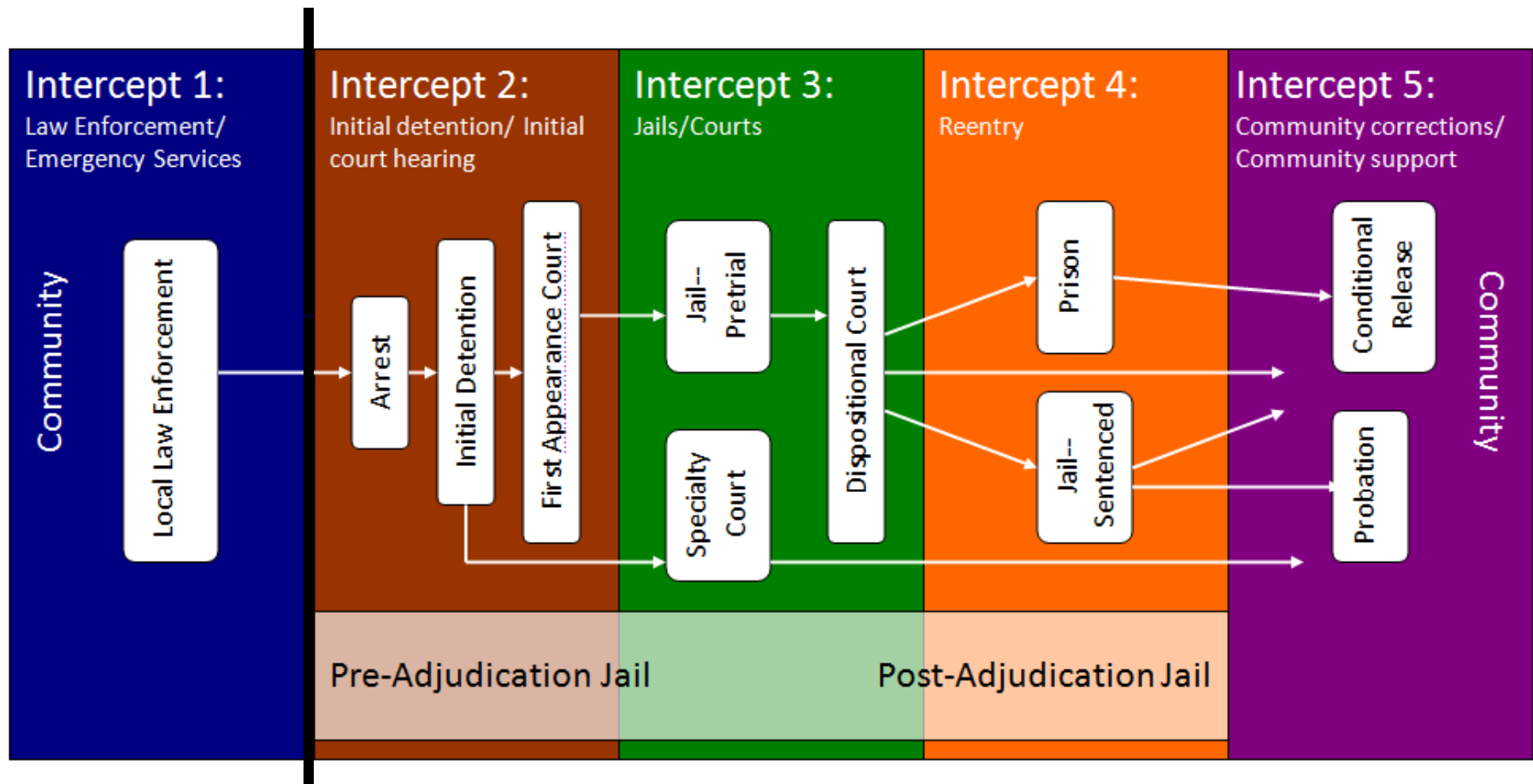
	#	%
340 North Street	40	4.6%
Transient/Homeless	22	2.5%
316 North Street	16	1.8%
General Delivery (Daytona Beach)	16	1.8%
115 East Howry Avenue	5	0.6%
Salvation Army	2	0.2%
TOTAL	101	11.6%

CJMHSAs Sample Data

Mental Health History of the Arrested Individuals

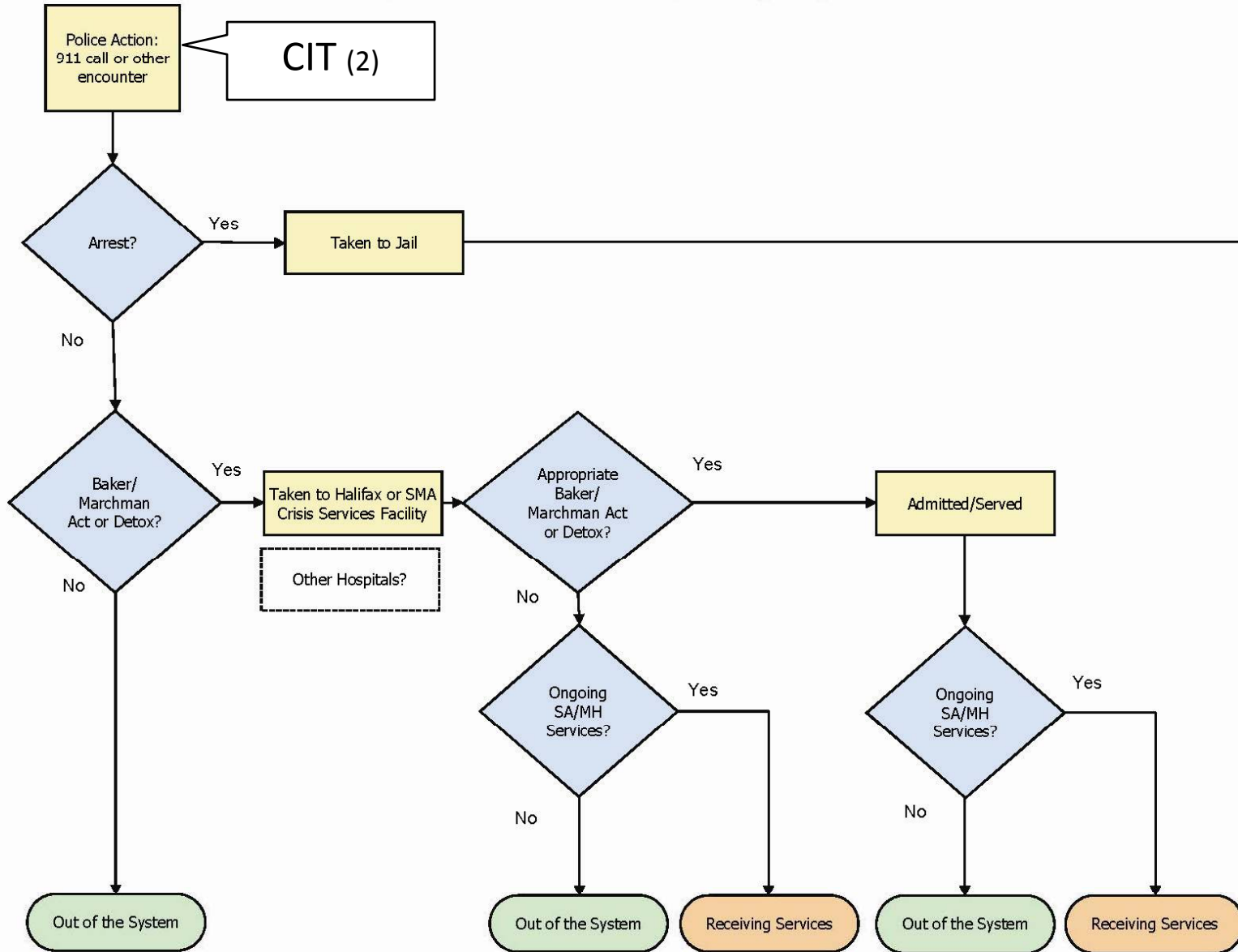
- Of the 874 individuals arrested, 145 (16.6%) had at some point received services from Act
 - Of the 874, 15 were receiving services at the time of arrest
 - Of the 874, 41 self-reported a mental health issue at booking
 - Of the 874, 2 were diverted through Act's Jail Diversion program

Intercept Model

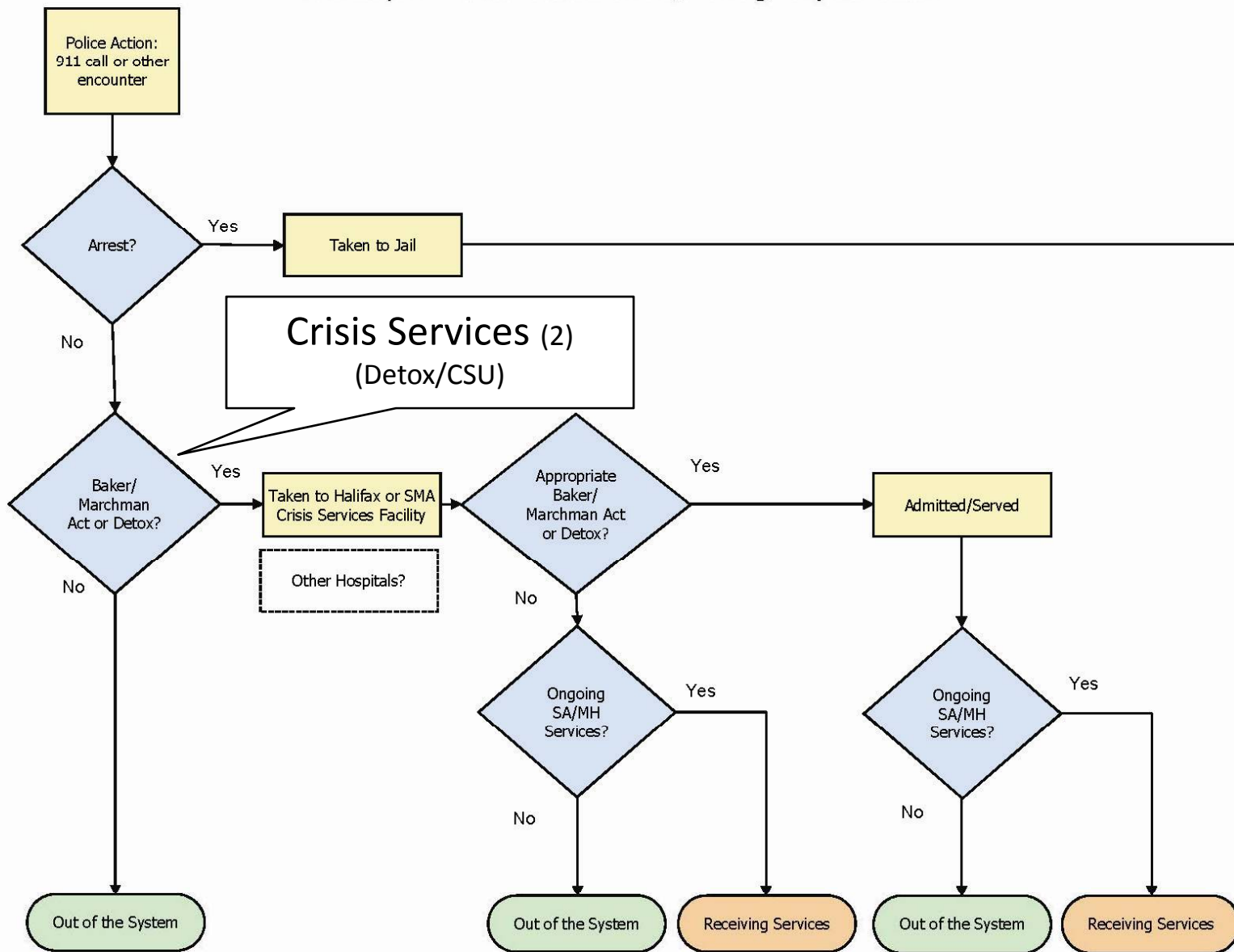


Ultimate Intercept: Best Clinical Practices

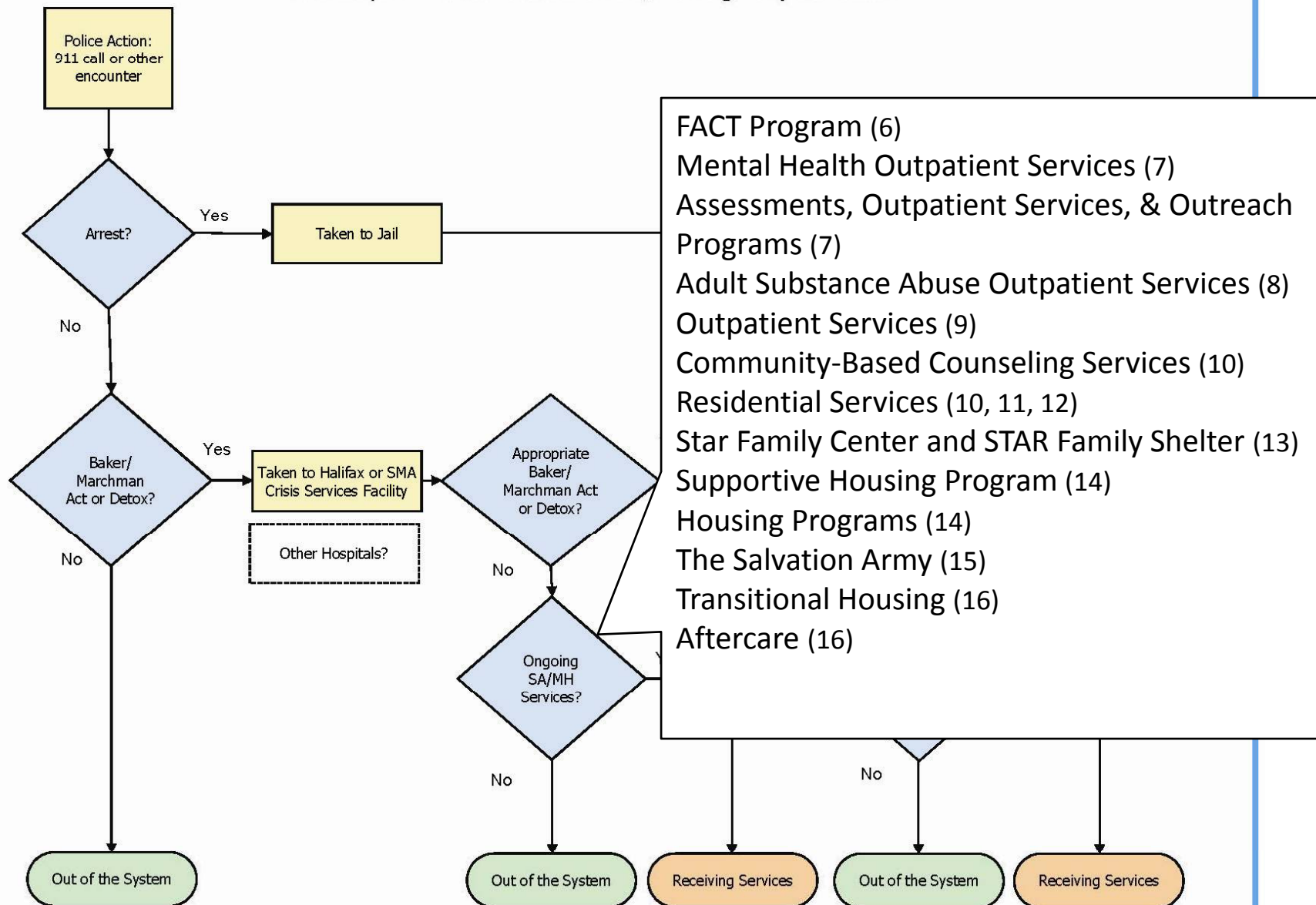
Intercept 1: Law Enforcement/Emergency Services

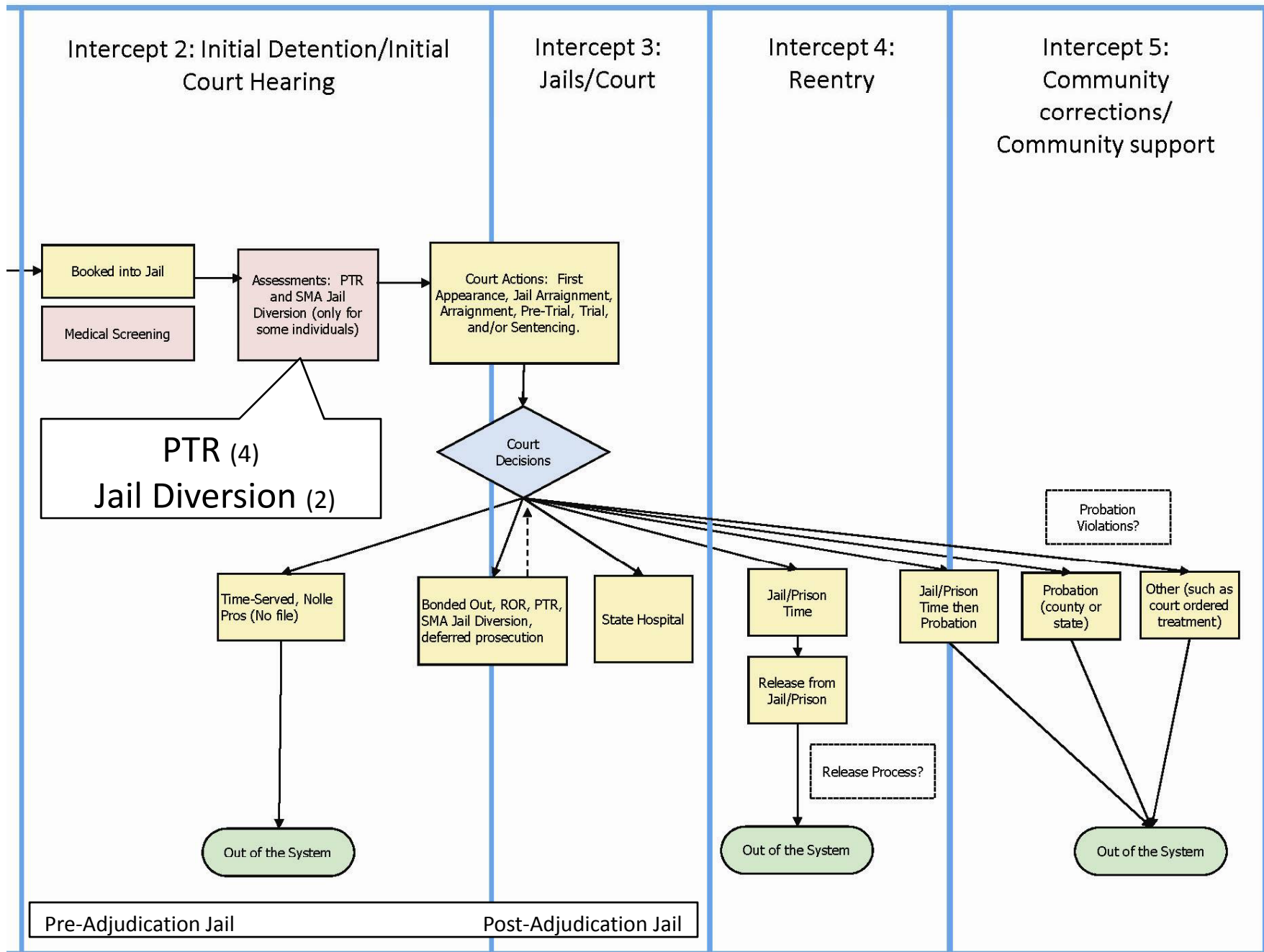


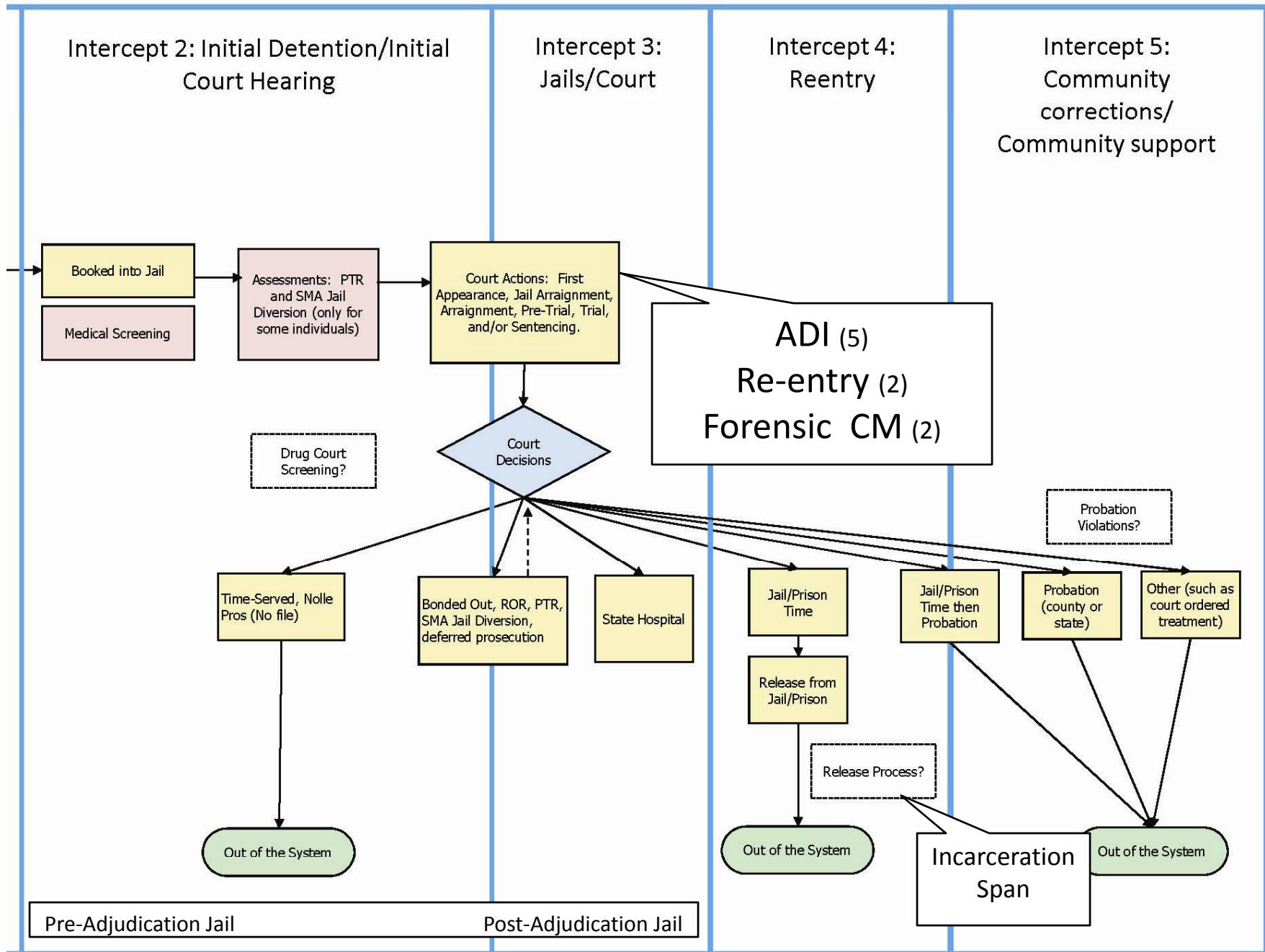
Intercept 1: Law Enforcement/Emergency Services

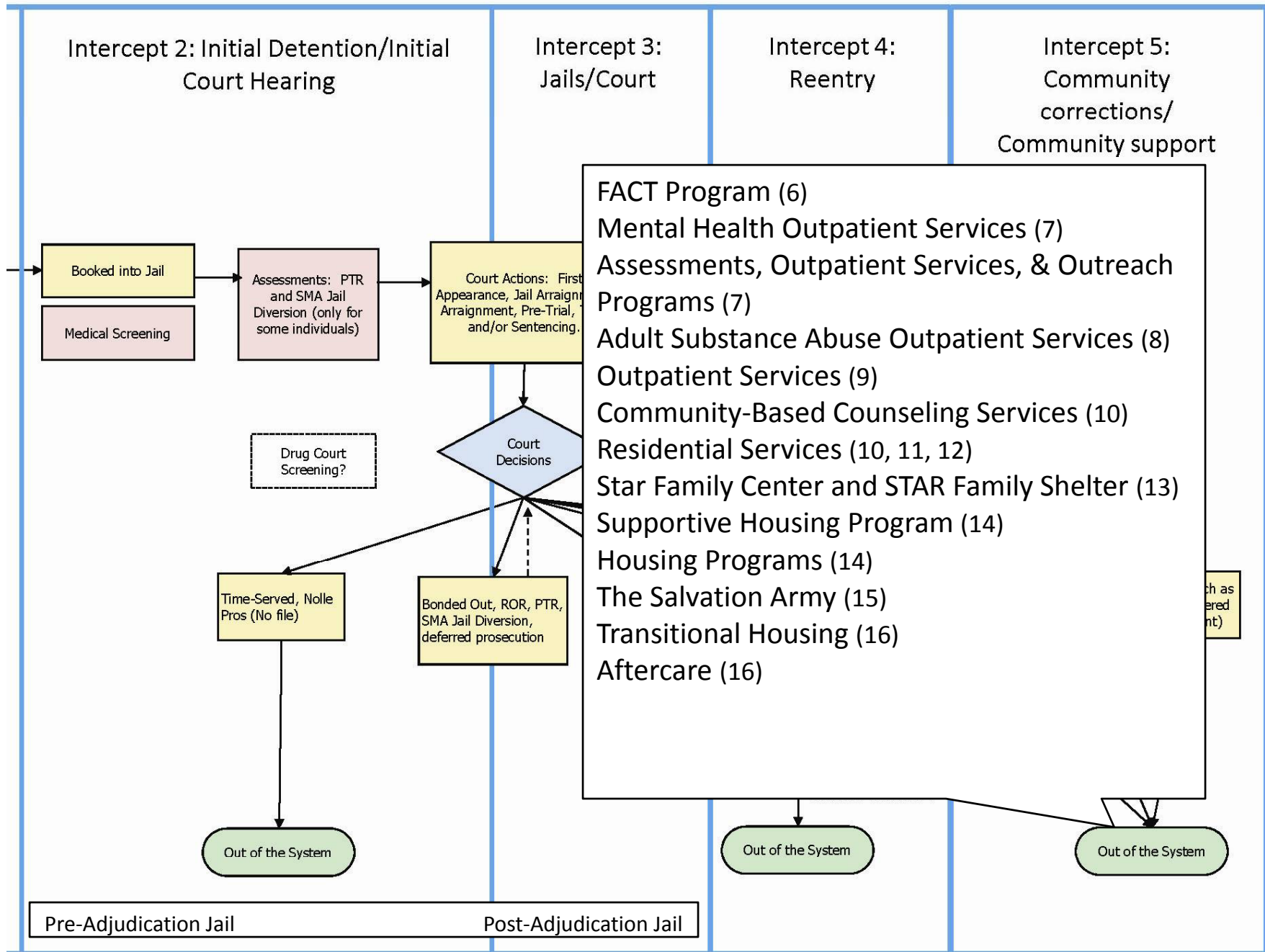


Intercept 1: Law Enforcement/Emergency Services









Initial Feedback on Potential Strategies

Follow-up Stakeholder Meeting

Volusia County Criminal Justice Mental Health and Substance Abuse Planning Project

January 9, 2009

3:00 p.m. to 5:00 p.m.

Daytona Beach International Airport, Volusia Room

Purpose of the Meeting:

- Final review and prioritization of strategies to include in the county's strategic plan

Please RSVP to Carrie Baird at 386-947-8301 or carrie@ovfv.org no later than December 31, 2008